

# vollara® AIR & SURFACEPRO<sup>+</sup>

This portable surface and air purifier uses ActivePure® Technology to eliminate contaminants on surfaces and in the air, while reducing odors caused by these contaminants.

## WHAT'S POLLUTING YOUR HOME?

- VOCs
- Pollen, dust and dander
- Mold and fungal spores
- Residue from household chemicals
- Poor outdoor air quality
- Garbage cans
- Athletic clothing
- Cooking odors
- Pets

## WHAT IT DOES

- New & Improved Patented ActivePure® Cell destroys over 99% of all surface and airborne contaminants faster
- Uses a UVC light to oxidize and ionize the air
- Reduces airborne contaminants and allergens that can trigger asthma and allergy symptoms
- Removes VOCs, smoke and odors to freshen the air

## SO WHAT IS ACTIVEPURE® TECHNOLOGY?

ActivePure is based on technology originally developed by NASA. It is proven to reduce over 99% of surface micro-organisms and dramatically reduce airborne contaminants and allergens in the air.



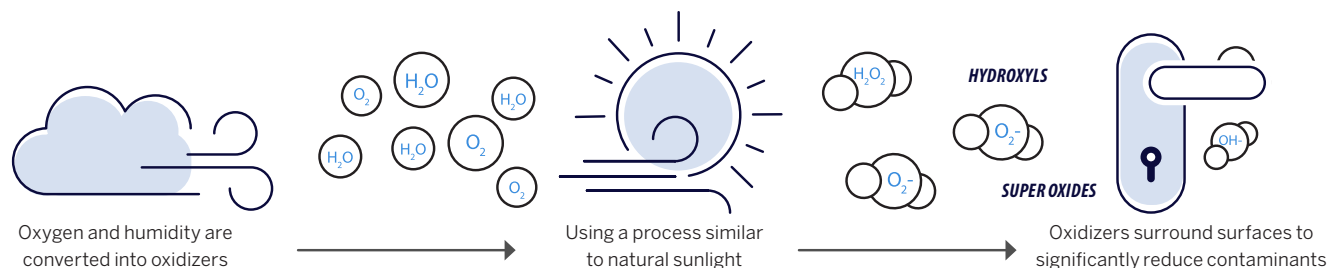
*In 2017, ActivePure® Technology was inducted into the Space Technology Hall of Fame by The Space Foundation.*

## HOW ACTIVEPURE® WORKS

ActivePure has been tested in independent labs and proven to reduce and eliminate viruses, bacteria, mold and fungi on surfaces and in the air.

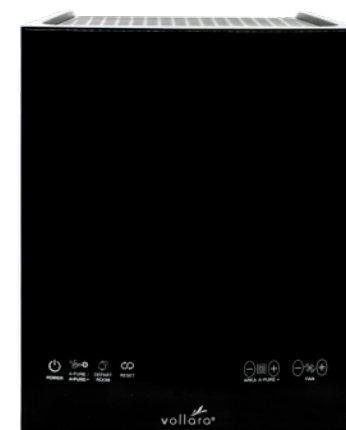
It works by harnessing microscopic oxygen and water molecules in the air that then go through our purification units, which are equipped with an ActivePure honeycomb matrix.

While inside the matrix, the molecules are transformed into friendly-yet-powerful oxidizers. As they're released back into the air, these supercharged ActivePure molecules seek and rapidly destroy contaminants, fungi, mold, and odor-causing bacteria – even ones that try to hide in hard-to-reach places.



## FEATURES

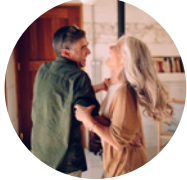
- Positive and Negative Multipoint and RF Ion Generation
- Five Speed Fan
- Adjustable Purifier Control (A·PURE+ only)
- LED Display
- HEPA and Activated Carbon filters
- Depart Room Function w/Adjustable Digital Timer
- Maintenance Reminders
- Replaceable ActivePure® Cell
- Removable Rear Grill
- Universal Power Supply with cords
- Uses only 43 Watts of electricity... less than a standard light bulb!





### HOW IT HELPS YOU

- Fewer sick days and cold / flu outbreaks
- Cleaner surfaces and air without using chemicals
- Better sleep
- Improved productivity by providing healthier surfaces and air
- Fresh, clean smelling air year-round
- Healthier living environment



### VOLLARA AIR & SURFACE PRO+ IS PERFECT FOR:

- Restless sleepers
- Allergy sufferers
- Pet owners
- Athletes
- Sensitive immune systems
- Teachers
- Caregivers



### ACTIVEPURE AROUND THE WORLD

Small Businesses



Liberty Bell Museum



Hotels



Schools



Training Facilities



Restaurants



### OTHER VOLLARA PRODUCTS YOU MAY ALSO LIKE:

#### LIVINGWATER

LivingWater generates acid-buffering alkaline water with negative Oxidation Reduction Potential (ORP) for increased antioxidant properties right from your faucet.



#### RE:VIVE

Re:Vive is our on-the-go energy supplement that significantly boosts energy, elevates mental focus and supports your health without the unwanted side effects found with most energy boosters.



#### LAUNDYPURE 2.0

LaundryPure 2.0 infuses cold water with hydrogen and oxygen-based oxidizers to lift dirt and grime from cloth fibers - leaving towels softer and fluffier, and clothes brighter and cleaner.



### READY TO ORDER A VOLLARA AIR & SURFACE PRO+?

---



---



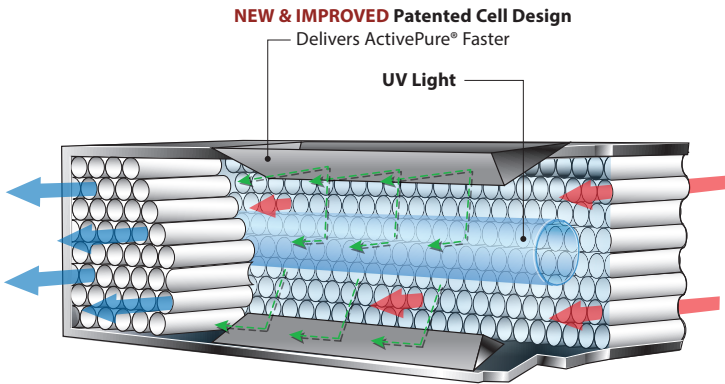
---



---



**PATENTED CELL DESIGN**



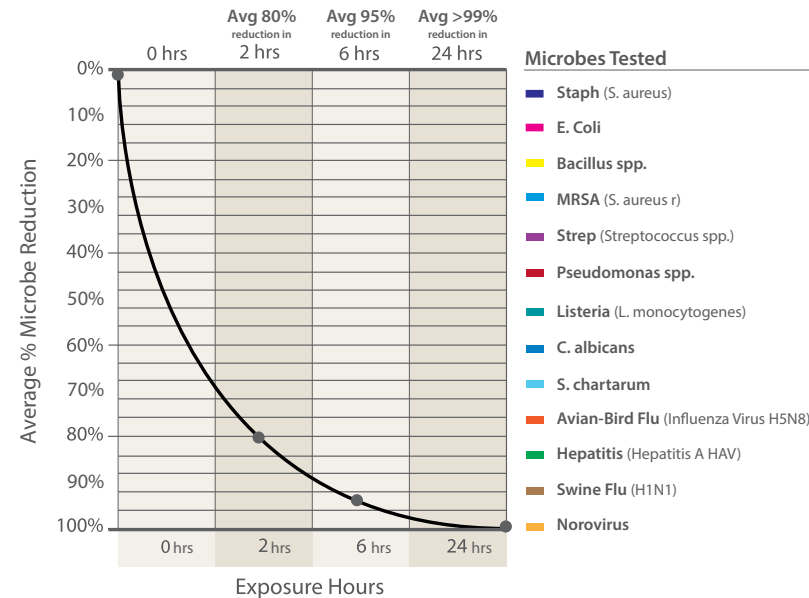
**SPECIFICATIONS**

<b>VOLLARA AIR &amp; SURFACE PRO<sup>+</sup></b>	<b>9940063 MODEL A1041B</b> NOTE: This unit does not meet California requirements and cannot be shipped to California.
Technology	<ul style="list-style-type: none"> <li>• ActivePure® Cell (1 included)</li> <li>• Positive and Negative Multipoint and RF Ion Generation</li> <li>• Purification Plate</li> </ul>
Electrical	<ul style="list-style-type: none"> <li>• 100 ~ 240VAC</li> <li>• 50/60 Hz External Power Supply</li> <li>• DC 24 Volts</li> <li>• 1.5 Amps Max.</li> <li>• Power Consumption: 43 Watts Max.</li> </ul>
Mechanical	Nominal Airflow Rate: 40-60 CFM Fan
Dimensions	11.75" high x 9.5" wide x 10" deep (29.8 cm x 24.1 cm x 25.4 cm)
Weight	7.6 pounds (3.45 kg)
Operating Temperature	34°F – 100°F
Coverage	Covers a range of 500 sq. ft. up to 3,000 sq. ft. (42 m <sup>2</sup> to 279 m <sup>2</sup> )*
Warranty	Limited 3 year warranty

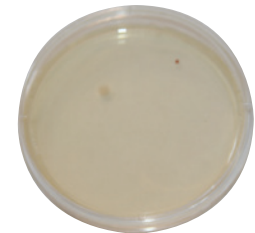
**SCIENTIFIC STUDIES**

**Reduction of Surface Contaminants**

ActivePure® (RCI) Technology 24 hour testings conducted by Kansas State University



**Before ActivePure® Technology**



**After 8 hours with ActivePure® Technology**

Before and after laboratory tests showing reductions of airborne contaminants with the ActivePure® Technology.

*Based on preliminary test results. Field results may vary. Results do not constitute scientific substantiation.*



2017 SPACE TECHNOLOGY HALL OF FAME INDUCTEE



PROUDLY DESIGNED, DEVELOPED AND ENGINEERED IN THE USA.



NATURE'S HEALTHY IONS

The ActivePure® Technology built into each Vollara Air & Surface Pro+ is based on a variation of the technology originally developed for use on the International Space Station and is recognized as the exclusive Certified Space Technology™ in its category.

\* Depends on variables such as severity and frequency of pollution, humidity, and temperature.